



## PRO-SHORE™'S REVOLUTIONARY PRO-NET SELF-CLIMBING SAFETY DEBRIS NETTING SYSTEM

PRO-NET Self-Climbing Safety Debris Netting System virtually alleviates the Fall Hazards and costly Man Hours associated with having workers tie off to take down "off the shelf netting" on each floor to move it up the building. Our ALL Aluminum Lightweight Self Climbing Safety Debris Netting System easily affixes temporarily to all various types of Building Deck Edge or Columns of Concrete Slab Structures.

PRO-NET Aluminum Frame can be hoisted up the Structure up to 3 floors at a time by use of either Tower Crane or time saving Mechanical Winches. The use of Mechanical Winches cuts down on costly Tower Crane Time and they allow you to lift the Safety Debris Netting System either per Bay, per side of the Building, or all sides of the building simultaneously as the building goes up. (qty of Winches dictates)

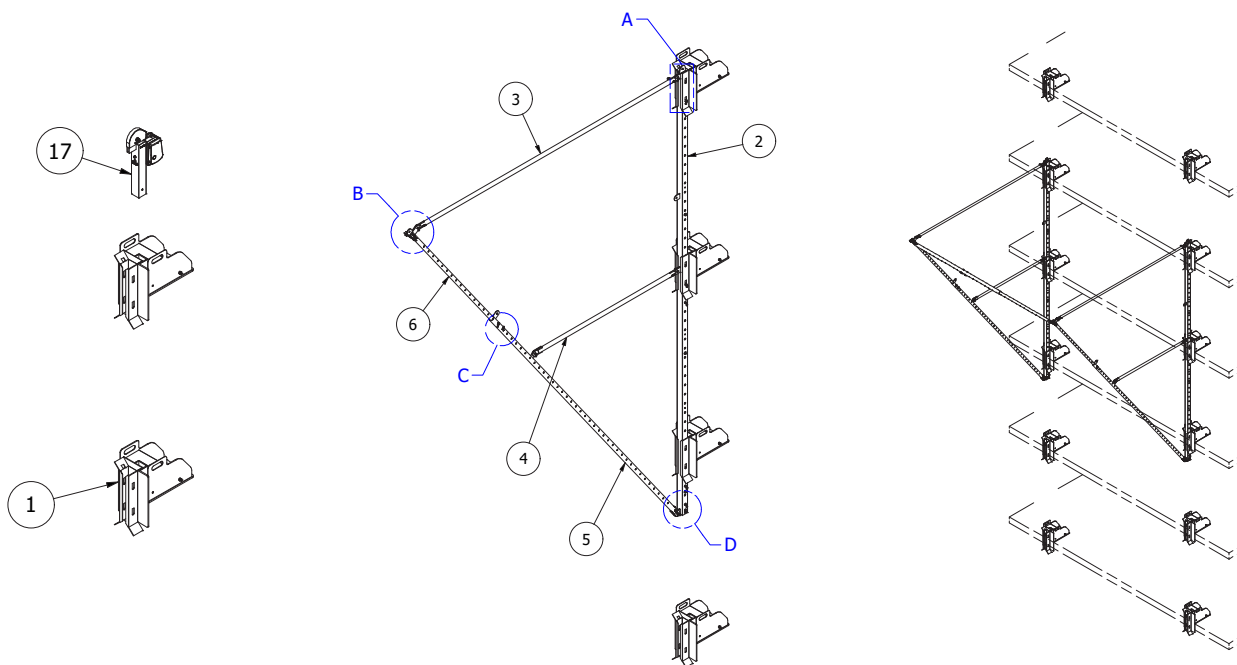
PRO-NET Self-Climbing Safety Debris Netting System stays attached to the structure throughout construction until you top out; Therefore, there are no costly and dangerous man-hours necessary to breakdown and bring the Safety Netting Structure back inside the building and up the man-lift or stairs each time you want to jump the Safety Debris Net.

PRO-NET Self Climbing Safety Debris Netting System easily adapts to balconies, soffits, columns and corners and it accepts standard off-the-shelf Mesh Netting from any supplier which can then be easily attached to the Safety Netting Structure with use of standard clips/carabiners.

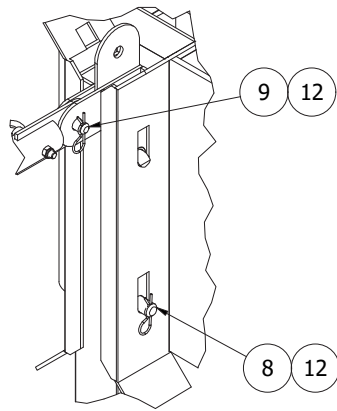
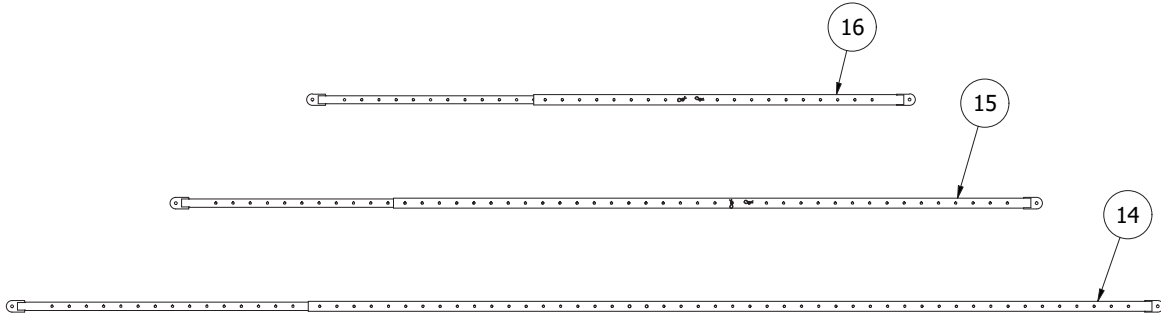
PRO-NET Self Climbing Safety Debris Netting System is fully tested and compliant with OSHA code 1926.502(c) regarding Safety Netting, specifically highlighted Section 1926.502(c)(4)(i)

# PART LIST

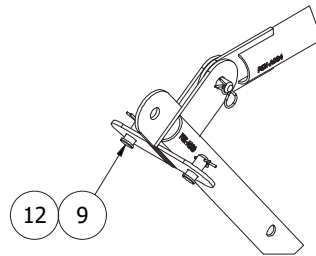
ITEM	PART #	PART DESCRIPTION	WEIGHT
1	PSK-A032	Mounting Bracket Assy	77.98
2	PSK-A005	Main Beam Assy	110.28
3	PSK-A034	Upper Connecting Pipe Assy	21.89
4	PSK-A007	Lower Connecting Pipe Assy	12.65
5	PSK-A008	Outer Outrigger Assy	40.42
6	PSK-A009	Inner Outrigger Assy	27.09
7	P0004	Clevis Pin Ø18mm x 90mm Long	.42
8	P0005	Clevis Pin Ø25mm x 150mm Long	1.33
9	P0003	Clevis Pin Ø20mm x 45mm Long	.27
10	P0007	Hex Locknut, Nylon M20x2.5 Class 10, Zinc	.22
11	P0006	Hex Head Cap Screw M20x2.5x80 Class 10.9, Zinc	.60
12	P0002	Hairpin Cotter Pin R10mm x Ø3.2mm Wire	.02
13	PO1248	Plate Washer, Rectangle 1/2 x 2 1/4 x 3 1/2 x 1, Galv	.99
14	PSK-A047	SNS Telescoping Assy, Span 26'-38'	88.15
15	PSK-A048	SNS Telescoping Assy, Span 20'-32'	74.02
16	PSK-A049	SNS Telescoping Assy, Span 12'-21'	49.60
17	PSK-A026	Removing Sheave & Winch Assy	31.55



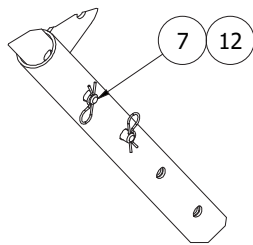




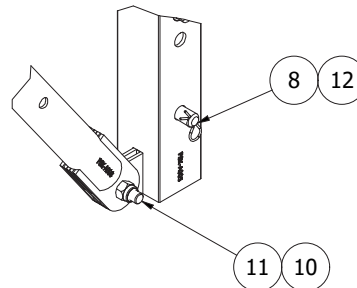
DETAIL A  
SCALE: 3/32



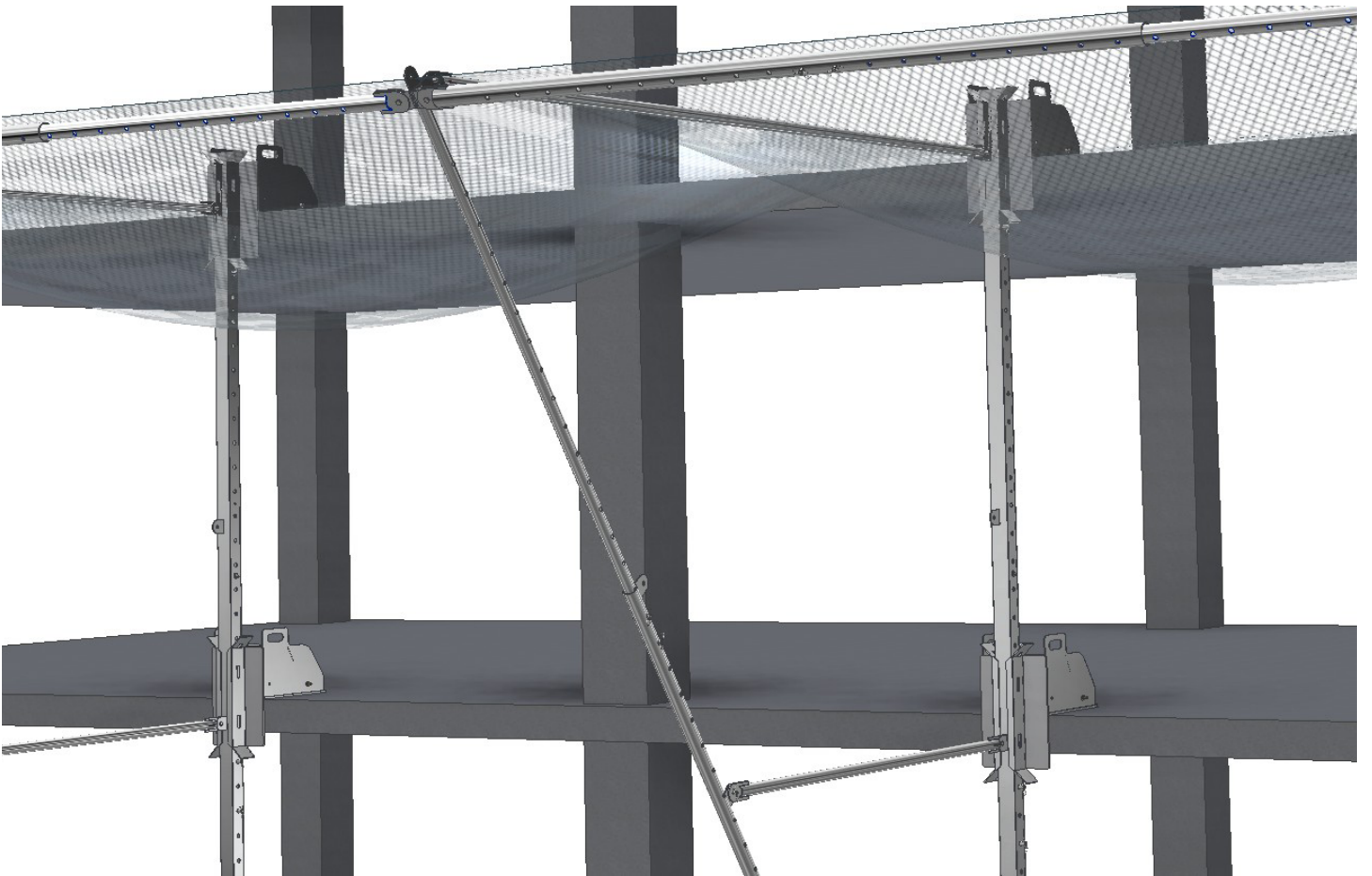
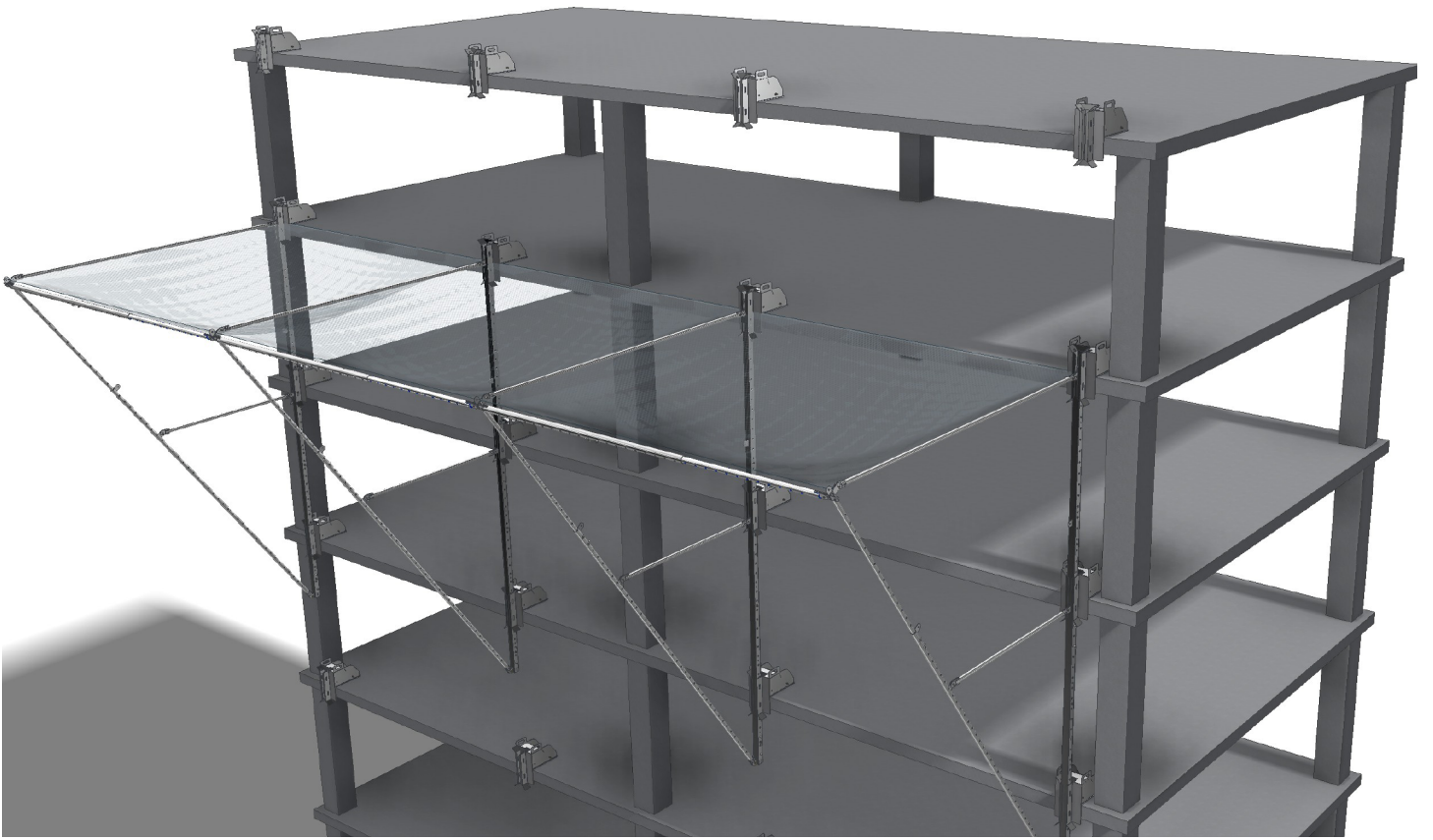
DETAIL B  
SCALE: 3/32



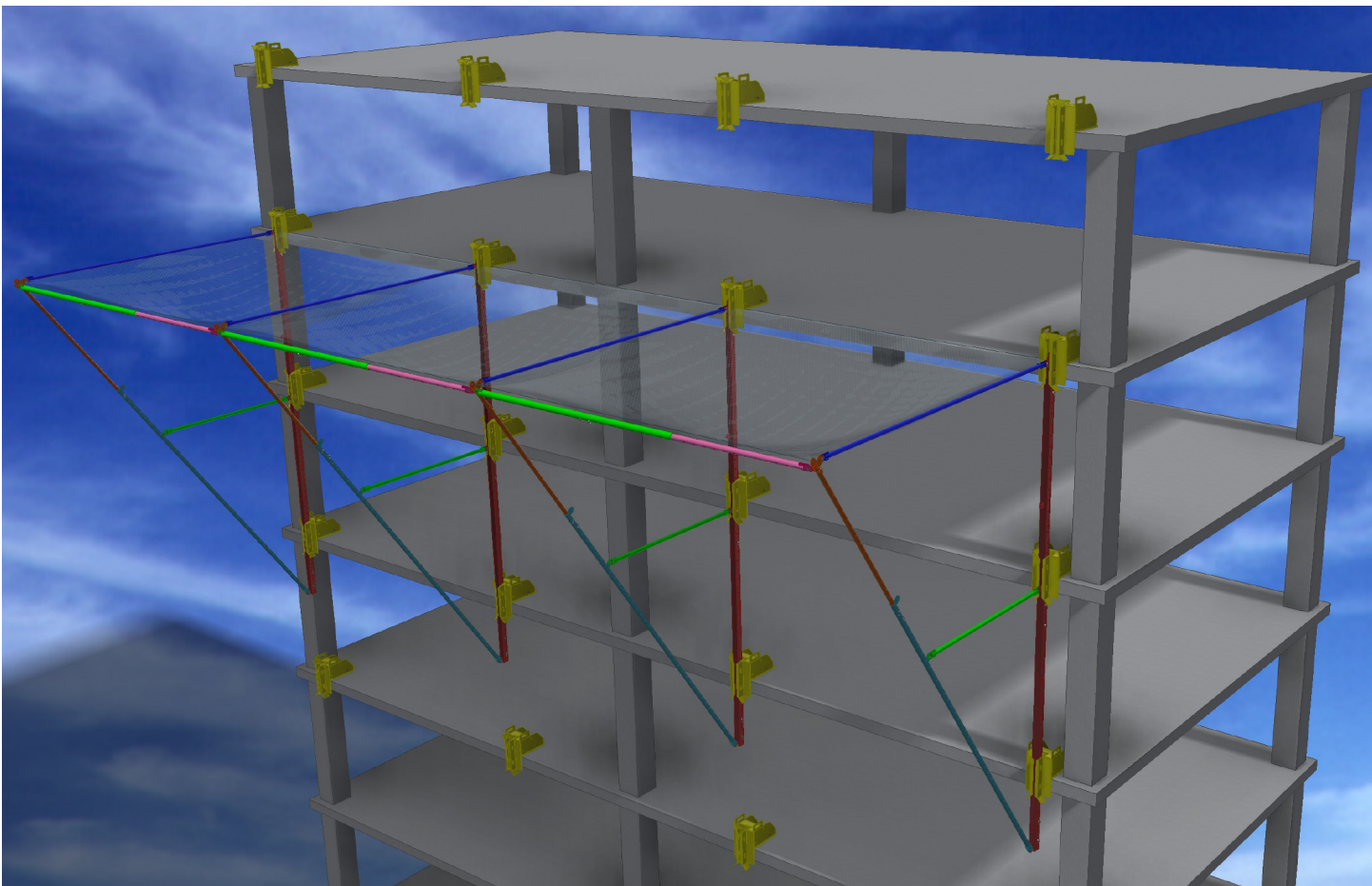
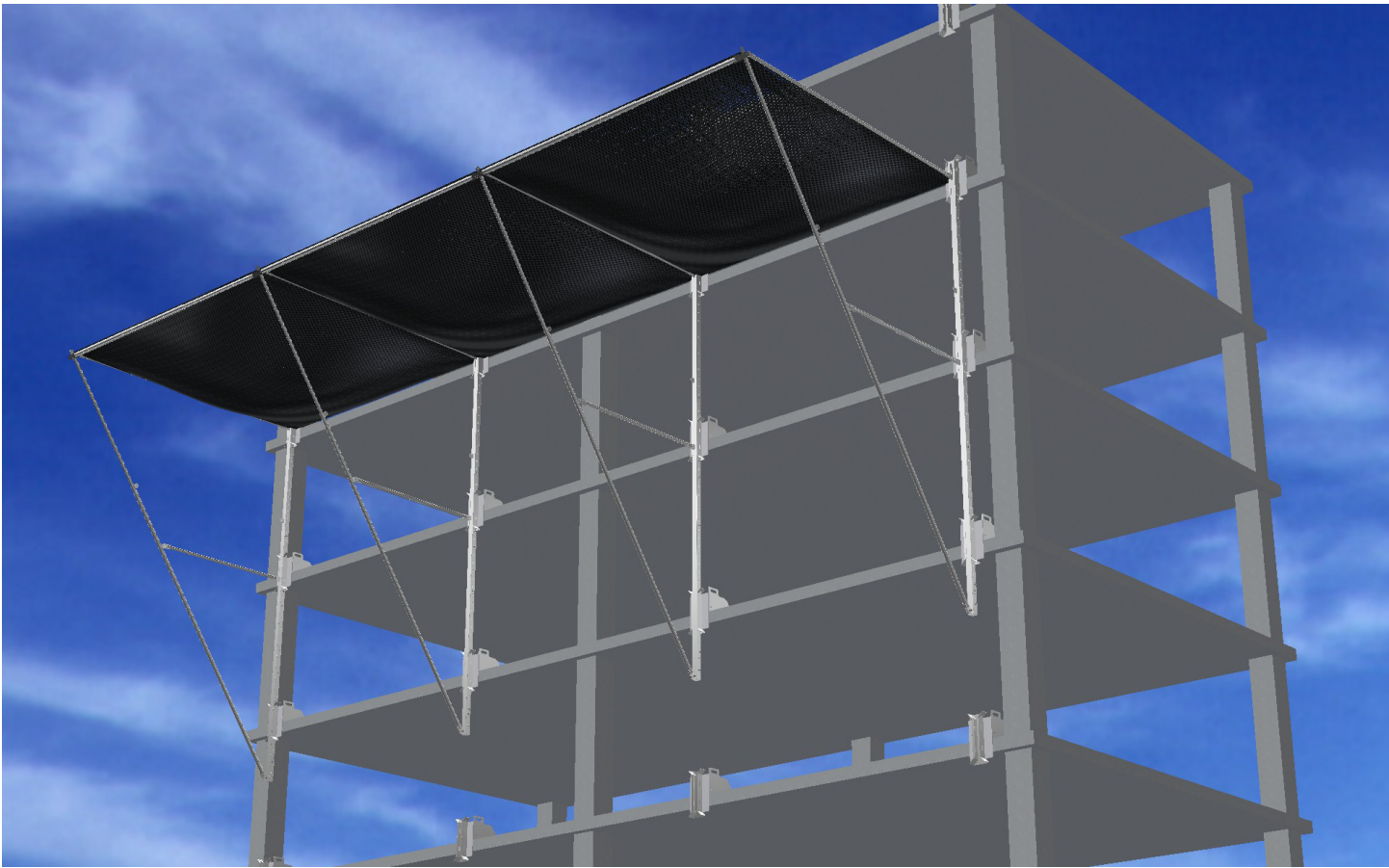
DETAIL C  
SCALE: 3/32



DETAIL D  
SCALE: 3/32











PRO-SHORE®, LLC | WWW.PRO-SHORE.COM



A



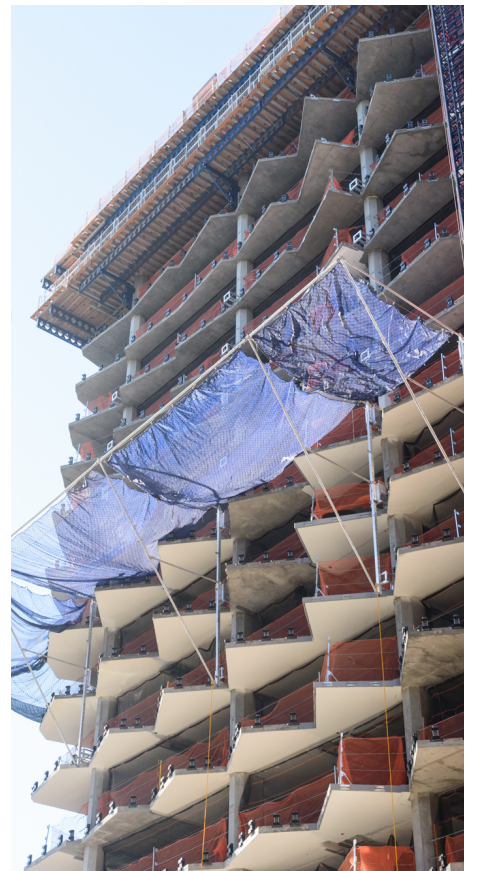
B



C

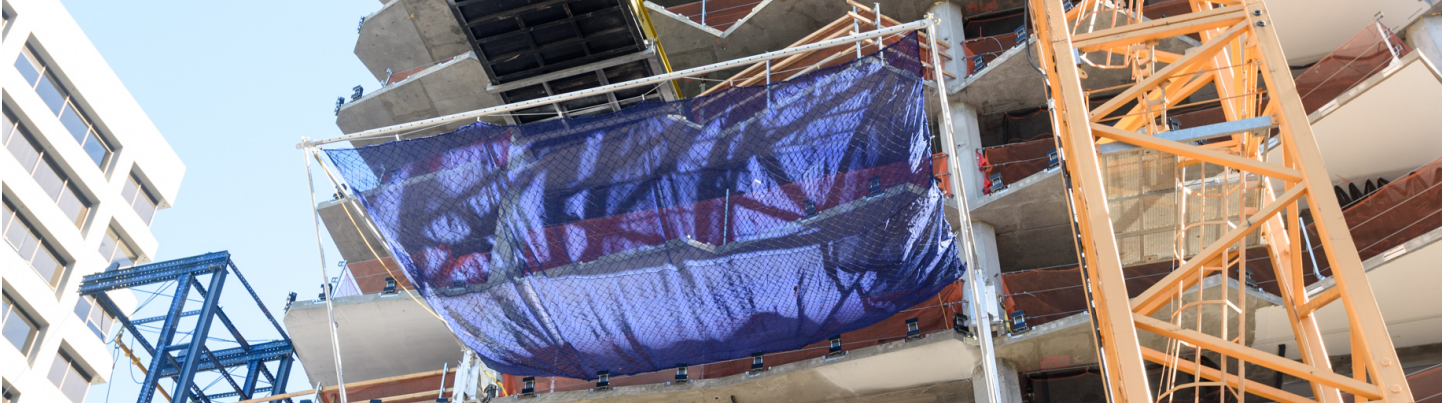


D

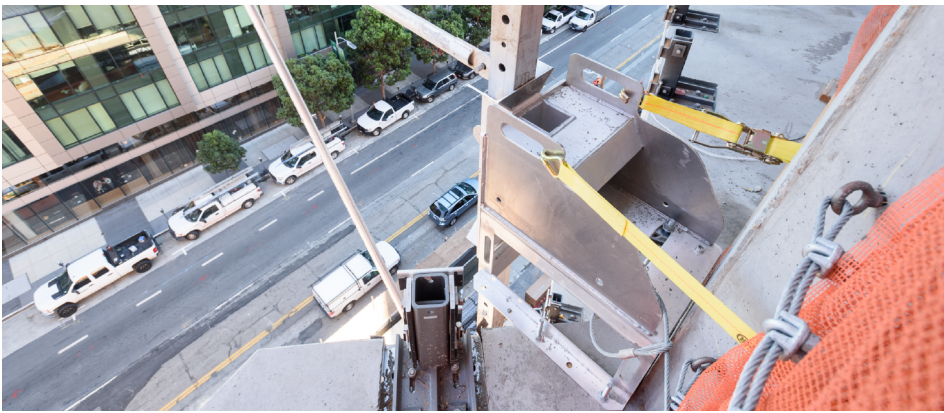


E





F



G



H



I



J



K

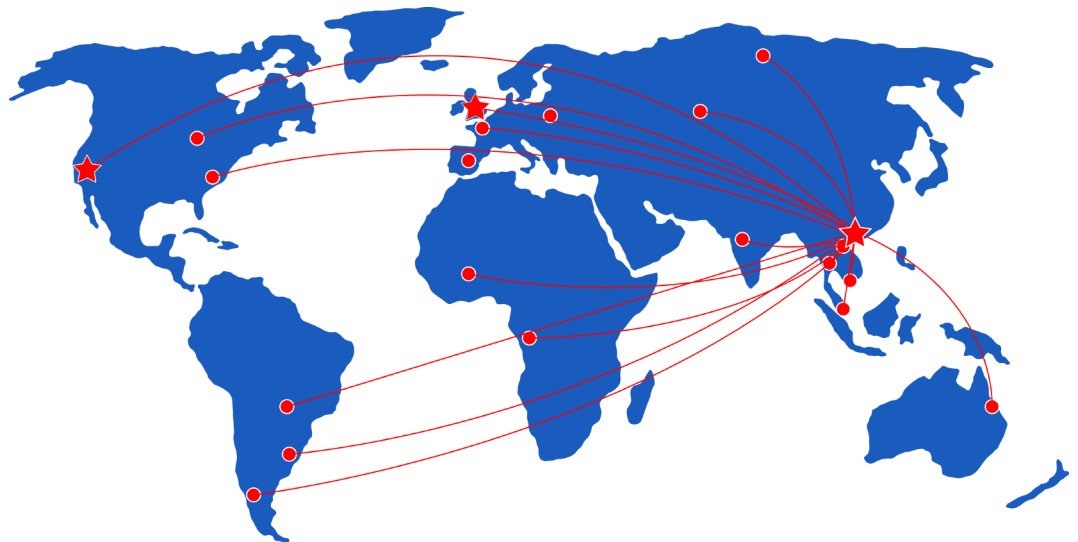




**Pro-Shore®, LLC**  
[www.pro-shore.com](http://www.pro-shore.com)

**Email:**  
[ron@pro-shore.net](mailto:ron@pro-shore.net)

**Direct Sales:**  
[ron@pro-shore.net](mailto:ron@pro-shore.net)  
[rob@pro-shore.net](mailto:rob@pro-shore.net)  
[brian@pro-shore.net](mailto:brian@pro-shore.net)



**Corporate Office:**  
2570 Boeing Way  
Stockton, CA 95206  
+1.209.636.2770

**Hong Kong:**  
33 Canton Road, Suite 1203, Tower 3  
Tsimshatsui, Kowloon, Hong Kong, China  
+852.8192.8578

**Warehouse/Yard:**  
2570 Boeing Way  
Stockton, CA 95206  
+1.209.636.2770

**Shipping/Receiving:**  
Monday-Friday  
7am to 4pm  
Contact Rob Barry at [rob@pro-shore.net](mailto:rob@pro-shore.net)